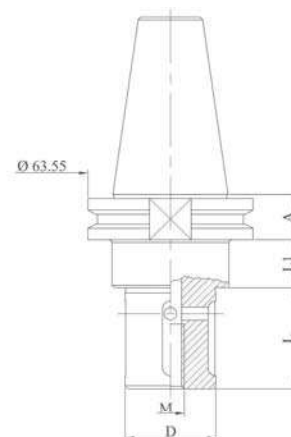




GRINDING WHEEL HOLDER

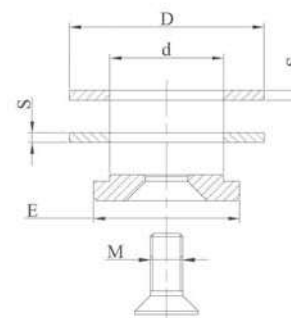
Code	A	D	L	L1
MVBA310	19,1	13	20	15,9
MVBA311	19,1	22	20	15,9
MVBA322	19,1	22	34	15,9
MVBA312	19,1	22	39	15,9
MVBA323	19,1	22	47	15,9
MVBA313	19,1	22	80	15,9
MVBA314	19,1	35	20	15,9
MVBA324	19,1	35	34	15,9
MVBA315	19,1	35	39	15,9
MVBA325	19,1	35	47	15,9
MVBA310	19,1	35	80	15,9



LOCKING KIT

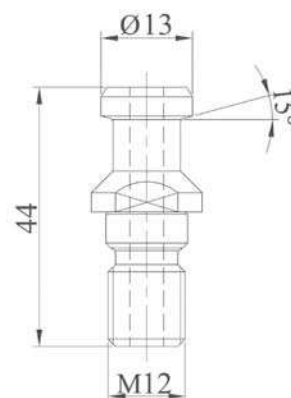
Kit made up of 2 spacer rings, 1 locking washer, 1 stainless steel or zinc-coated locking screw.

Code	d	D	E	M	S
M100	12	30	30	6	2
M200	22	60	45	10	3
M210	35	60	45	12	3

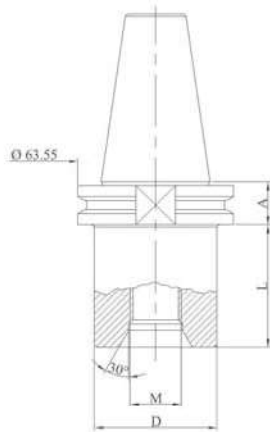


PULL STUD

Code	Type
MVBA300	M12 angle 15°

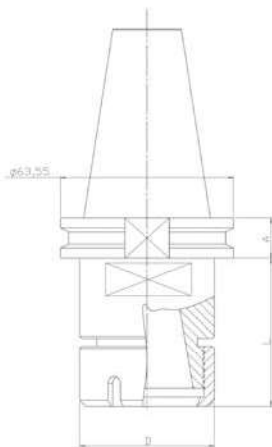


Special tool holders are made on request



DRILL POINT HOLDER

Code	A	M	D	L
MVBA301	19,1	1/2"	40	35
MVBA302	19,1	1/2"	40	50
MVBA306	19,1	M30	40	35



ER COLLET CHUCK HOLDER

Code	A	Collet type	D	L
MVBA330	19,1	ER25	42	53,4
MVBA331	19,1	ER32	50	53,4

For ER collets see page 77
 For wrenches see page 75
 For ring nuts see page 75



Special tool holders are made on request