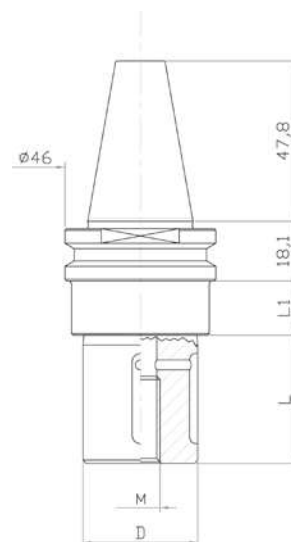




GRINDING WHEEL HOLDER

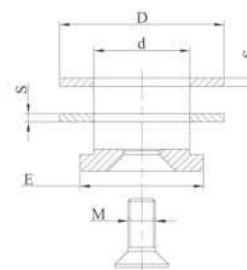
| Code | D | L |
|----------|----|----|
| MVHSG122 | 22 | 34 |
| MVHSG122 | 22 | 39 |
| MVHSG124 | 35 | 34 |
| MVHSG115 | 35 | 39 |



LOCKING KIT

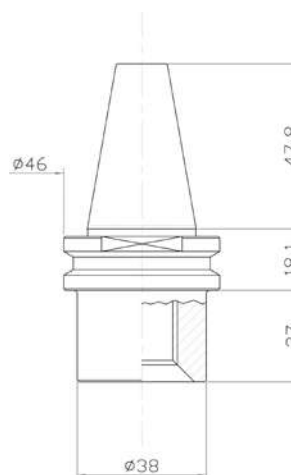
Kit made up of 2 spacer rings, 1 locking washer, 1 stainless steel or zinc-coated locking screw.

| Code | d | D | E | M | S |
|------|----|----|----|----|---|
| M200 | 22 | 60 | 45 | 10 | 3 |
| M210 | 35 | 60 | 45 | 12 | 3 |



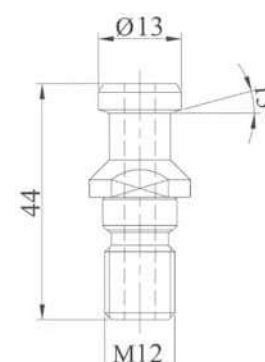
DRILL POINT HOLDER

| Code | D | L |
|----------|----|----|
| MVSKG101 | 40 | 35 |



PULL STUD

| Code | Type |
|----------|---------------|
| MVSKG300 | M12 ANGLE 15° |



Special tool holders are made on request