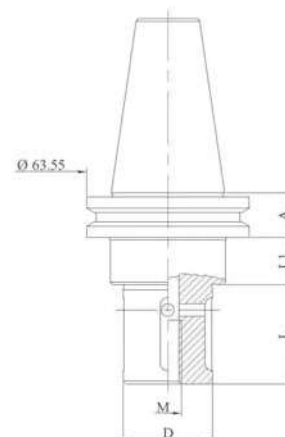




### GRINDING WHEEL HOLDER

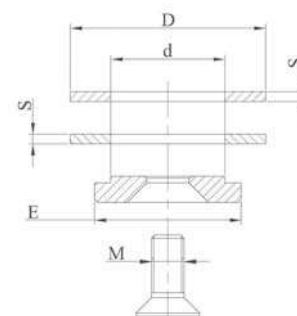
Code	A	D	L	L1
MVBR111NT	19,1	22	20	50
MVBR122NT	19,1	22	34	50
MVBR112NT	19,1	22	39	50
MVBR123NT	19,1	22	47	50
MVBR113NT	19,1	22	80	50
MVBR114NT	19,1	35	20	50
MVBR124NT	19,1	35	34	50
MVBR115NT	19,1	35	39	50
MVBR125NT	19,1	35	47	50
MVBR116NT	19,1	35	80	50



### LOCKING KIT

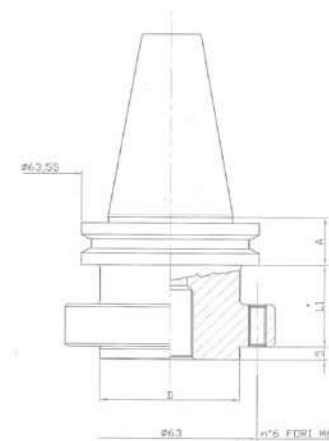
Kit made up of 2 spacer rings, 1 locking washer, 1 stainless steel or zinc-coated locking screw.

Code	d	D	E	M	S
M200	22	60	45	10	3
M210	35	60	45	12	3



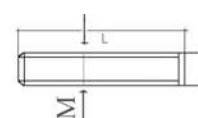
### GRINDING WHEEL HOLDER

Code	A	D	L	L1
MVBR121NTC	19,1	50	5	35 6 holes
MVBR126NTL	19,1	50	5	150 6 holes

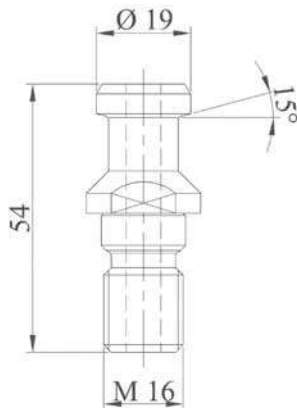


### LOCKING KIT

Code	M	L
M230	n° 6 screws	35

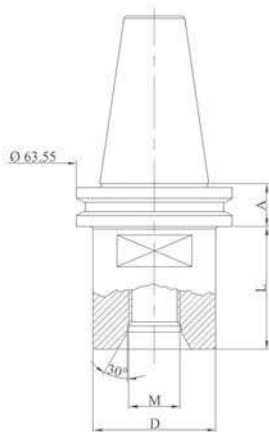


*Special tool holders are made on request*



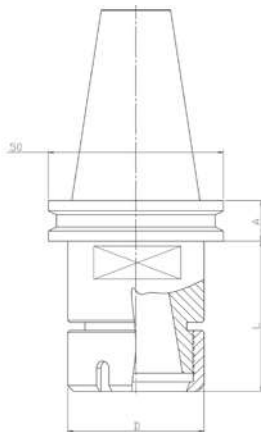
### PULL STUD

Code	Type
MVBR900	M16 angle 15°



### DRILL POINT HOLDER

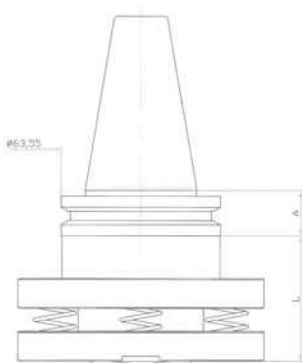
Code	A	M	D	L1
MVBR101NT	19,1	1/2"	50	50
MVBR106NT	19,1	M30	50	50
MVBR102NT	19,1	1/2"	50	80
MVBR103NT	19,1	1/2"	50	100
MVBR104NT	19,1	1/2"	50	150
MVBR105NT	19,1	1/2"	50	200
MVBR107NT	19,1	1/2"	50	250



### ER COLLET CHUCK HOLDER

Code	A	Collet type	D	L
MVBR131NT	19,1	ER32	50	53,40
MVBR132NT	19,1	ER40	63	57,15

For ER collets see page 77  
 For wrenches see page 75  
 For ring nuts see page 75



### SPRING LOADED ADAPTER

Code	A	L
MVBR140NT	19,1	40

*Special tool holders are made on request*