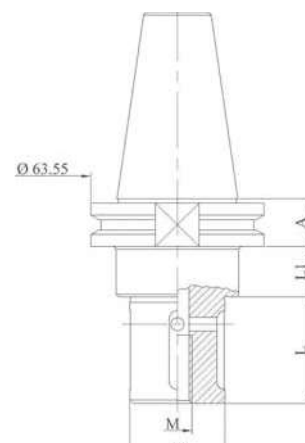




GRINDING WHEEL HOLDER

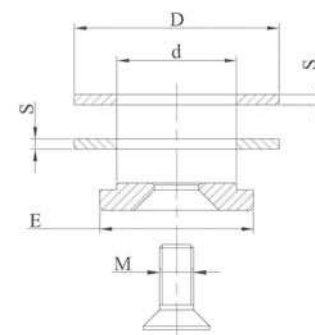
| Code | A | D | L | L1 |
|---------|------|----|-----|----|
| MVGA111 | 19,1 | 22 | 20 | 60 |
| MVGA122 | 19,1 | 22 | 34 | 60 |
| MVGA112 | 19,1 | 22 | 39 | 60 |
| MVGA123 | 19,1 | 22 | 47 | 60 |
| MVGA113 | 19,1 | 22 | 80 | 60 |
| MVGA114 | 19,1 | 35 | 20 | 60 |
| MVGA124 | 19,1 | 35 | 34 | 60 |
| MVGA115 | 19,1 | 35 | 39 | 60 |
| MVGA125 | 19,1 | 35 | 47 | 60 |
| MVGA116 | 19,1 | 35 | 80 | 60 |
| MVGA119 | 19,1 | 35 | 150 | 60 |
| MVGA117 | 19,1 | 45 | 45 | 60 |
| MVGA120 | 19,1 | 45 | 170 | 60 |



LOCKING KIT

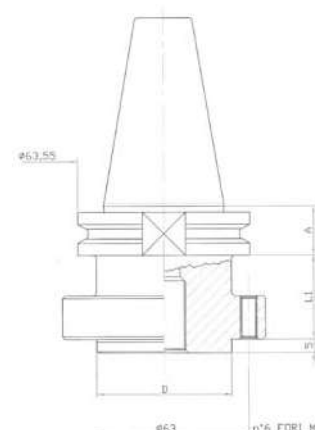
Kit made up of 2 spacer rings, 1 locking washer, 1 stainless steel or zinc-coated locking screw.

| Code | d | D | E | M | S |
|------|----|----|----|-----|---|
| M200 | 22 | 60 | 45 | 10 | 3 |
| M210 | 35 | 60 | 45 | 12 | 3 |
| M220 | 45 | 98 | 78 | M16 | 3 |



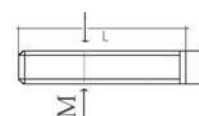
GRINDING WHEEL HOLDER

| Code | A | D | L1 |
|----------|------|----|----|
| MVGA121C | 19,1 | 50 | 35 |
| MVGA126L | 19,1 | 50 | 75 |

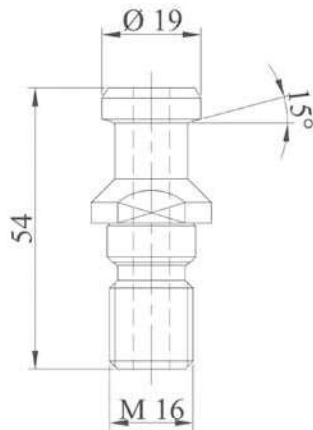


LOCKING KIT

| Code | M | L |
|------|-------------|----|
| M230 | n° 6 screws | 35 |

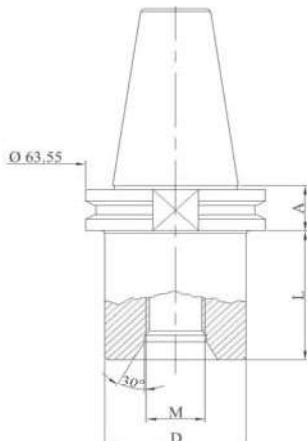


Special tool holders are made on request



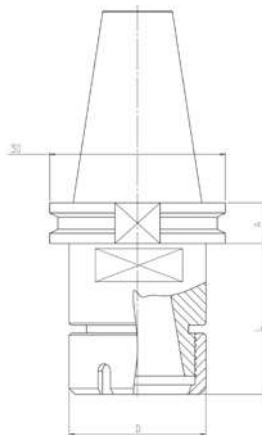
PULL STUD

| Code | Type |
|---------|---------------|
| MVGA900 | M16 angle 15° |
| MVIN900 | Radius |



DRILL POINT HOLDER

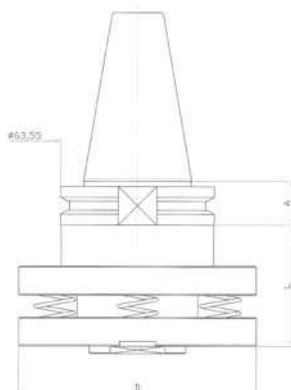
| Code | A | M | D | L |
|-----------|------|------|----|-----|
| MVGA101 | 19,1 | 1/2" | 50 | 55 |
| MVGA106 | 19,1 | M30 | 50 | 55 |
| MVGA102 | 19,1 | 1/2" | 50 | 80 |
| MVGA103 | 19,1 | 1/2" | 50 | 100 |
| MVGA104 | 19,1 | 1/2" | 50 | 150 |
| MVGA105 | 19,1 | 1/2" | 50 | 200 |
| MVGA107 | 19,1 | 1/2" | 50 | 250 |
| MVGA101SX | 19,1 | 1/2" | 50 | 50 |



ER COLLET CHUCK HOLDER

| Code | A | Collet type | D | L |
|---------|------|-------------|----|------|
| MVGA131 | 19,1 | ER32 | 50 | 72,5 |
| MVGA132 | 19,1 | ER40 | 63 | 72,5 |

For ER collets see page 77
 For wrenches see page 75
 For ring nuts see page 75



SPRING LOADED ADAPTER

| Code | A | L |
|---------|------|----|
| MVGA140 | 19,1 | 50 |

Special tool holders are made on request