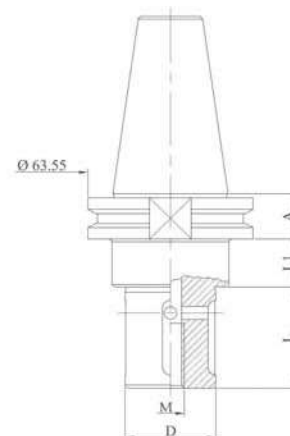




GRINDING WHEEL HOLDER

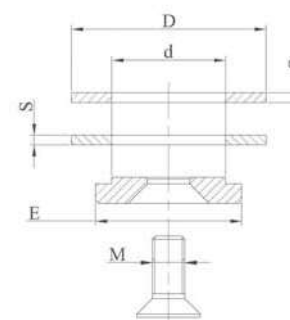
Code	A	D	L	L1
MVBT111	19,1	22	20	15,9
MVBT122	19,1	22	34	15,9
MVBT112	19,1	22	39	15,9
MVBT123	19,1	22	47	15,9
MVBT113	19,1	22	80	15,9
MVBT114	19,1	35	20	15,9
MVBT124	19,1	35	34	15,9
MVBT115	19,1	35	39	15,9
MVBT125	19,1	35	47	15,9
MVBT116	19,1	35	80	15,9
MVBT117	19,1	45	190	15,9



LOCKING KIT

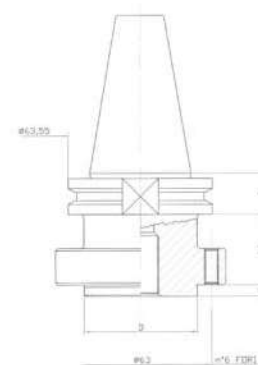
Kit made up of 2 spacer rings, 1 locking washer, 1 stainless steel or zinc-coated locking screw.

Code	d	D	E	M	S
M200	22	60	45	10	3
M210	35	60	45	12	3
M220	45	98	78	M16	3



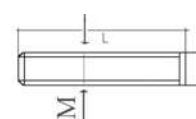
GRINDING WHEEL HOLDER

Code	A	D	L1
MVBT121C	19,1	50	35
MVBT126L	19,1	50	75

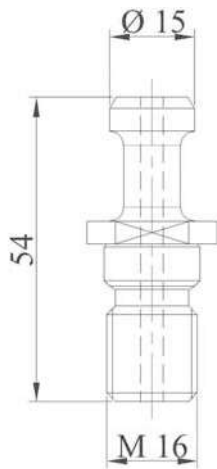


LOCKING KIT

Code	M	L
M230	n° 6 screws	6 35

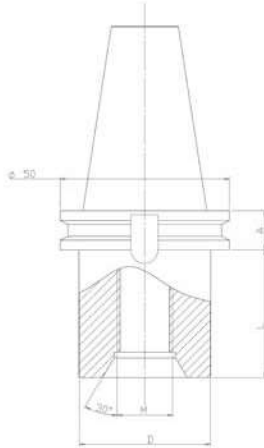


Special tool holders are made on request



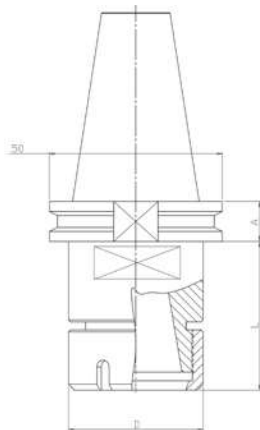
PULL STUD

Code	Type
MVBT900	M16 radiused



DRILL POINT HOLDER

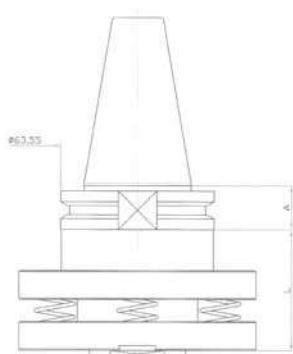
Code	A	M	D	L
MVBT101	19,1	1/2"	50	50
MVBT106	19,1	M30	50	50



ER COLLET CHUCK HOLDER

Code	A	Collet type	D	L
MVBT131	19,1	ER32	50	53,4
MVBT132	19,1	ER40	63	57,4

For ER collets see page 77
 For wrenches see page 75
 For ring nuts see page 75



SPRING LOADED ADAPTER

Code	A	L
MVBT140	19,1	40

Special tool holders are made on request