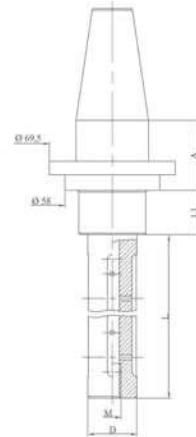




GRINDING WHEEL HOLDER

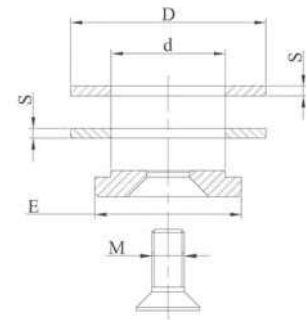
Code	A	D	L	L1
MVRA141	33	30	148	30,6
MVRA143	33	35	148	30,6
MVRA146	33	45	148	30,6
MVRA115	33	30	39	30,6
MVRA116	33	30	47	30,6
MVRA124	33	35	39	30,6
MVRA125	33	35	47	30,6



LOCKING KIT

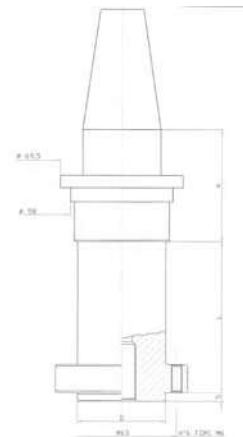
Kit made up of 2 spacer rings, 1 locking washer, 1 stainless steel or zinc-coated locking screw.

Code	d	D	E	M	S
M200	30	60	60	12	3
M210	35	60	45	12	3
M220	45	98	78	M16	3



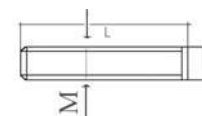
GRINDING WHEEL HOLDER

Code	A	D	L	L1
MVRA126	33	50	70	30,6 6 holes

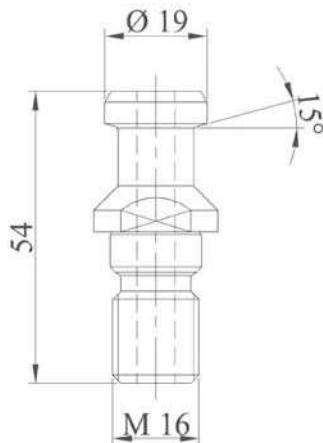


LOCKING KIT

Code	M	L
M230	n° 6 screws	6

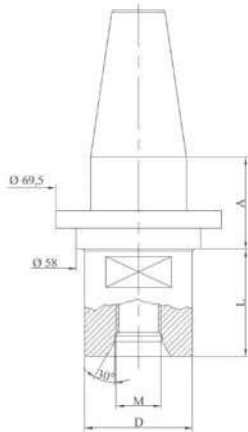


Special tool holders are made on request



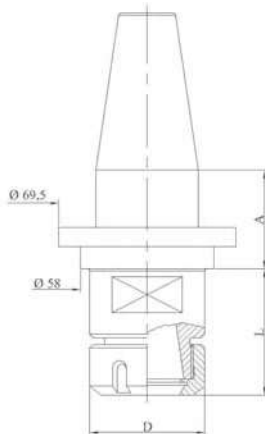
PULL STUD

Code	Type
MVRA900	M16 angle 15°



DRILL POINT HOLDER

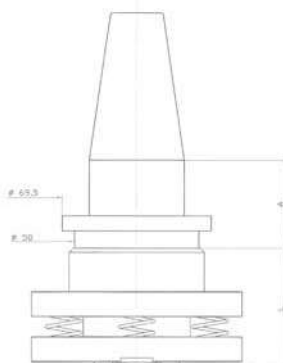
Code	A	M	D	L1
MVRA101	33	1/2"	54	51,6
MVRA106	33	M30	54	51,6



ER COLLET CHUCK HOLDER

Code	A	Collet type	D	L
MVRA131	33	ER32	50	60
MVRA132	33	ER40	63	70

For ER collets see page 77
 For wrenches see page 75
 For ring nuts see page 75



SPRING LOADED ADAPTER

Code	A	L
MVRA140	33	60

Special tool holders are made on request