

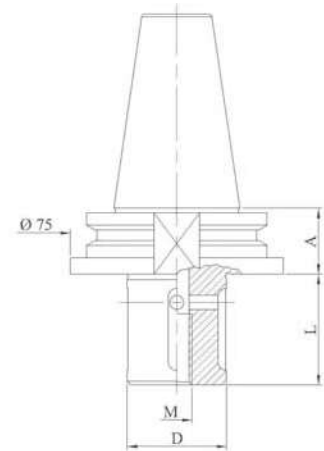
# Tool holders ISO 40

Type "Intermac", "Bimatech", "Northwood"  
"IND Montanari", "Campagnola & Fedeli"



## GRINDING WHEEL HOLDER

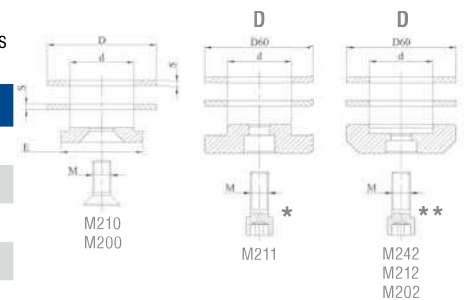
Code	A	D	L
MVIN109	25	12	23
MVIN110	25	12	14
MVIN111	25	22	20
MVIN122	25	22	34
MVIN112	25	22	39
MVIN123	25	22	47
MVIN113	25	22	80
MVIN113-B	25	22	90
MVIN113-C	25	22	100
MVIN114	25	35	20
MVIN124	25	35	34
MVIN115	25	35	39
MVIN125	25	35	47
MVIN116	25	35	80
MVIN117	25	43	170
MVIN118	25	45	45
MVIN119	25	45	100
MVIN120	25	45	170



## LOCKING KIT

Kit made up of 2 spacer rings, 1 locking washer, 1 stainless steel or zinc-coated locking screw.

Code	d	D	E	M	S
M100	12	30	30	6	2
M200	22	60	45	10	5 *
M202	22	60	45	10	5 **
M210	35	60	45	12	3
M211	35	60	45	10	3 *
M212	35	60	45	10	3 **
M220	45	98	78	16	3

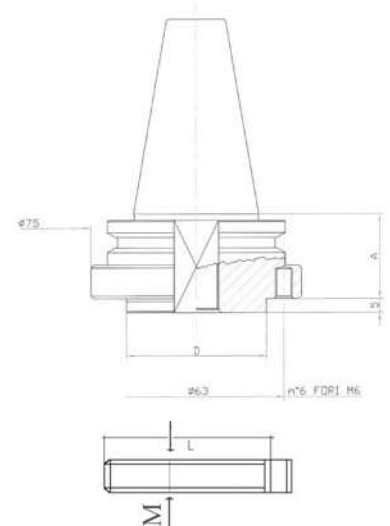


## GRINDING WHEEL HOLDER

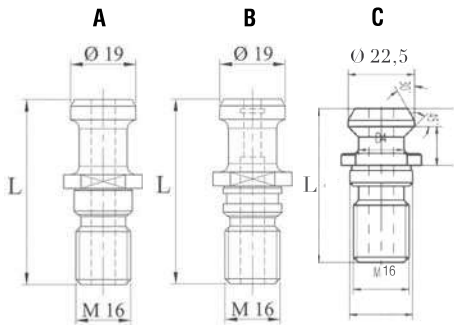
Code	A	D	N°	L
MVIN121C	25	50	6 holes	30
MVIN126L	25	50	6 holes	100
MVIN127L	25	50	6 holes	150
MVIN128L	25	50	6 holes	200
MVIN129L	25	50	6 holes	300
MVIN130L	25	50	6 holes	500

## LOCKING KIT

Code	M	L
M230	n° 6 screws	6 35

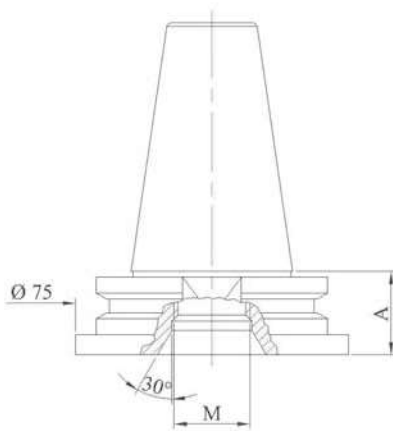


*Special tool holders are made on request*



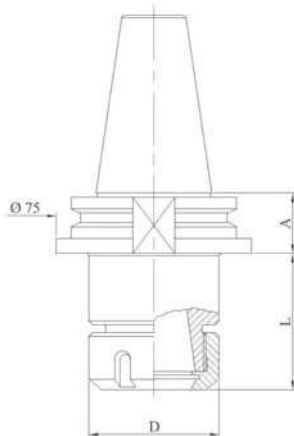
## PULL STUD

Code	Type	L	D
MVIN900 (A)	Intremac	54	19
MVBM900 (B)	Bimatech	54	19
MVTN900 (C)	Northwood	44,5	22,5



## DRILL POINT HOLDER

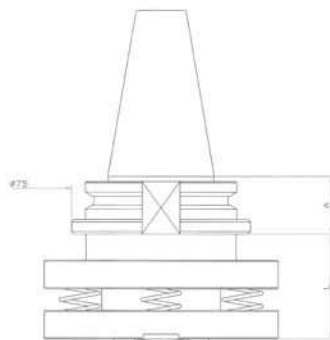
Code	A	M	L
MVIN101	25	1/2"	0
MVIN106	25	M30	0
MVIN102	25	1/2"	100
MVIN103	25	1/2"	200
MVIN104	25	1/2"	250
MVIN105	25	1/2"	300
MVIN106	25	1/2"	400
MVIN107	25	1/2"	500



## ER COLLET CHUCK HOLDER

Code	A	Collet type	D	L
MVIN131	25	ER32	50	52,5
MVIN132	25	ER40	63	56,5

For ER collets see page 77  
For wrenches see page 75  
For ring nuts see page 75



## SPRING LOADED ADAPTER

Code	A	L
MVIN140	25	40

*Special tool holders are made on request*