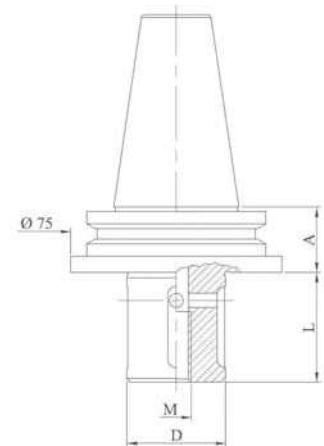




### GRINDING WHEEL HOLDER

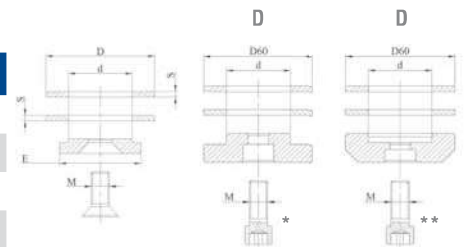
Code	A	D	L
MVFA109	25	12	23
MVFA110	25	12	14
MVFA111	25	22	20
MVFA122	25	22	34
MVFA112	25	22	39
MVFA123	25	22	47
MVFA113	25	22	80
MVFA113-B	25	22	90
MVFA113-C	25	22	100
MVFA114	25	35	20
MVFA124	25	35	34
MVFA115	25	35	39
MVFA125	25	35	47
MVFA116	25	35	80
MVFA117	25	45	45
MVFA118	25	35	100
MVFA119	25	45	170



### LOCKING KIT

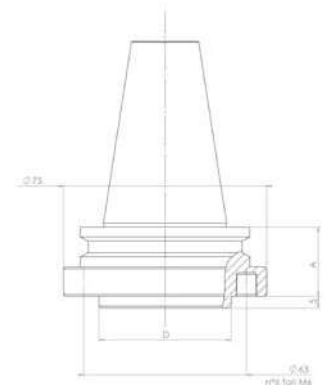
Kit made up of 2 spacer rings, 1 locking washer, 1 stainless steel or zinc-coated locking screw.

Code	d	D	E	M	S
M100	12	30	30	6	2
M200	22	60	45	10	5 *
M202	22	60	45	10	5 **
M210	35	60	45	12	3
M211	35	60	45	10	3 *
M212	35	60	45	10	3 **
M220	45	98	78	16	3



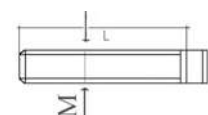
### GRINDING WHEEL HOLDER

Code	A	D	N°	L
MVFA121C	25	50	6 holes	500
MVFA126L	25	50	6 holes	100
MVFA127L	25	50	6 holes	150
MVFA128L	25	50	6 holes	200
MVFA129L	25	50	6 holes	300

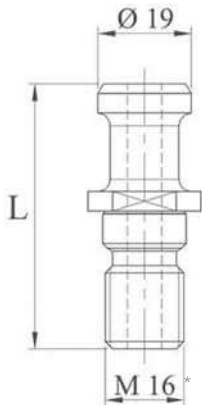


### LOCKING KIT

Code	M	L
M230	n° 6 screws	35

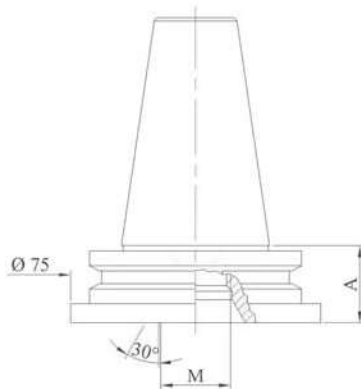


*Special tool holders are made on request*



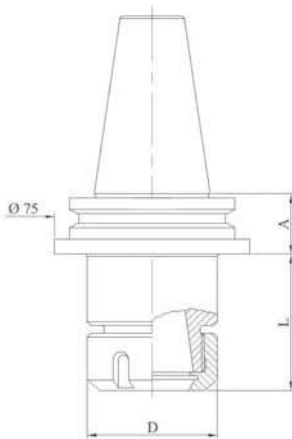
### PULL STUD

Code	Type	L	D	
MVFA900	Intremac	54	19	*



### DRILL POINT HOLDER

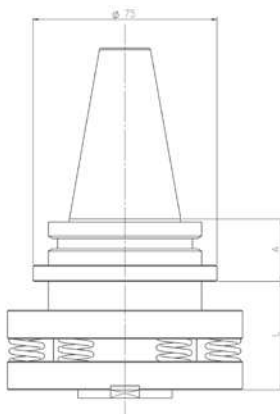
Code	A	M	L
MVFA101	25	1/2"	0
MVFA106	25	M30	0
MVFA102	25	1/2"	100
MVFA103	25	1/2"	200
MVFA104	25	1/2"	250
MVFA105	25	1/2"	300



### ER COLLET CHUCK HOLDER

Code	A	Collet type	D	L
MVFA131	25	ER32	50	52,5
MVFA132	25	ER40	63	56,5

For ER collets see page 77  
 For wrenches see page 75  
 For ring nuts see page 75



### SPRING LOADED ADAPTER

Code	A	L
MVFA140	25	40

*Special tool holders are made on request*