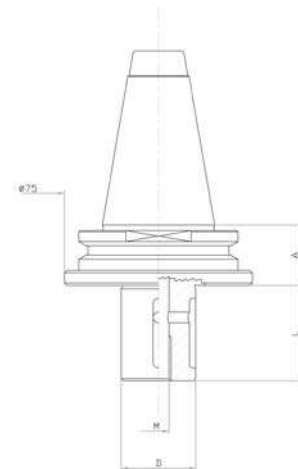




GRINDING WHEEL HOLDER

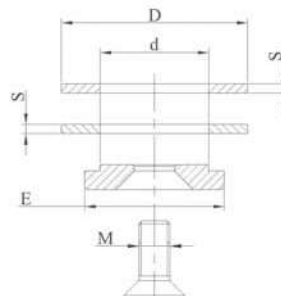
Code	A	D	L
MVBU109	25	12	23
MVBU110	25	12	14
MVBU111	25	22	20
MVBU122	25	22	34
MVBU112	25	22	39
MVBU123	25	22	47
MVBU113	25	22	80
MVBU113-B	25	22	90
MVBU113-C	25	22	100
MVBU114	25	35	20
MVBU124	25	35	34
MVBU115	25	35	39
MVBU125	25	35	47
MVBU116	25	35	80
MVBU117	25	45	45
MVBU118	25	35	100
MVBU119	25	45	170



LOCKING KIT

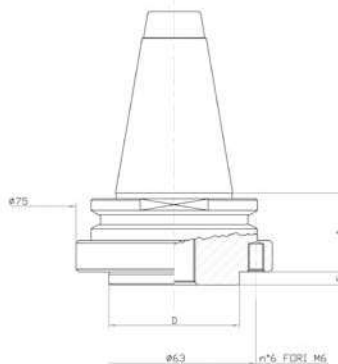
Kit made up of 2 spacer rings, 1 locking washer, 1 stainless steel or zinc-coated locking screw.

Code	d	D	E	M	S
M200	22	60	45	10	5
M210	35	60	45	12	3
M220	45	98	78	16	3



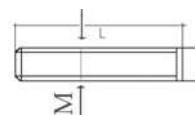
GRINDING WHEEL HOLDER

Code	A	D	N°	L
MVBU121C	25	50	6 holes	500
MVBU126L	25	50	6 holes	100
MVBU127L	25	50	6 holes	150
MVBU128L	25	50	6 holes	200
MVBU129L	25	50	6 holes	300

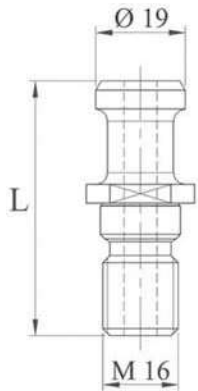


LOCKING KIT

Code	M	L
M230	n° 6 screws	6 35

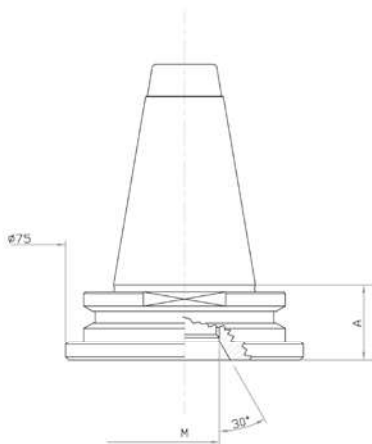


Special tool holders are made on request



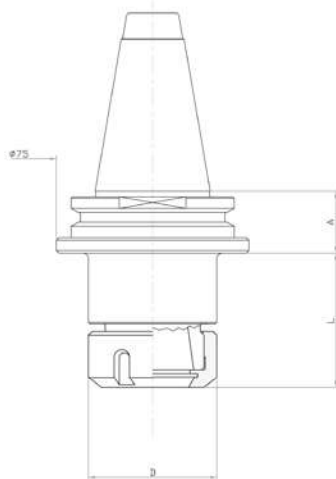
PULL STUD

Code	Type	L	D
MVBU900	Intremac	54	19



DRILL POINT HOLDER

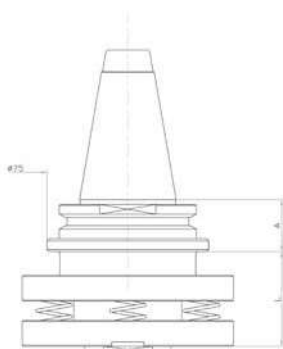
Code	A	M	L
MVBU101	25	1/2"	0
MVBU106	25	M30	0
MVBU102	25	1/2"	100
MVBU103	25	1/2"	200
MVBU104	25	1/2"	250
MVBU105	25	1/2"	300



ER COLLET CHUCK HOLDER

Code	A	Collet type	D	L
MVBU131	25	ER32	50	52,5
MVBU132	25	ER40	63	56,5

For ER collets see page 77
 For wrenches see page 75
 For ring nuts see page 75



SPRING LOADED ADAPTER

Code	A	L
MVBU140	25	40

Special tool holders are made on request