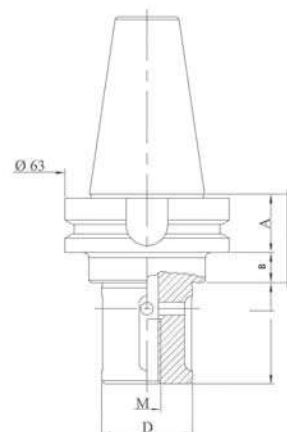




GRINDING WHEEL HOLDER

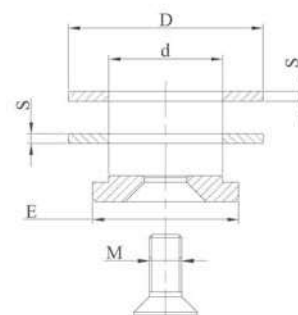
Code	A	D	L	B	L1
MVLF111	27	22	20	20	50
MVLF122	27	22	34	20	50
MVLF112	27	22	39	20	50
MVLF123	27	22	47	20	50
MVLF113	27	22	80	20	50
MVLF114	27	35	20	20	50
MVLF115	27	35	32	20	50
MVLF124	27	35	39	20	50
MVLF125	27	35	47	20	50
MVLF116	27	35	80	20	50
MVLF117	27	45	45	20	50



LOCKING KIT

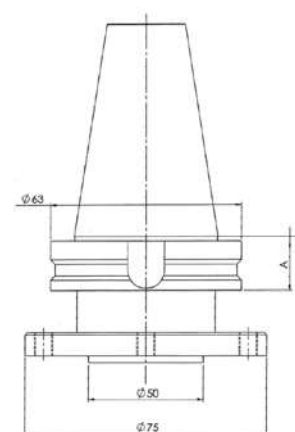
Kit made up of 2 spacer rings, 1 locking washer, 1 stainless steel or zinc-coated locking screw.

Code	d	D	E	M	S
M200	22	60	45	10	3
M210	35	60	45	12	3
M220	45	98	78	M16	3



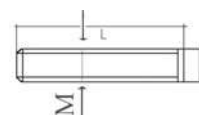
GRINDING WHEEL HOLDER

Code	A	D	L
MVLF121C	27	50	50
MVLF126L	27	50	75

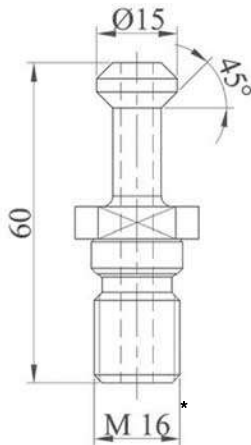


LOCKING KIT

Code	M	L
M230	n° 6 screws	6 35

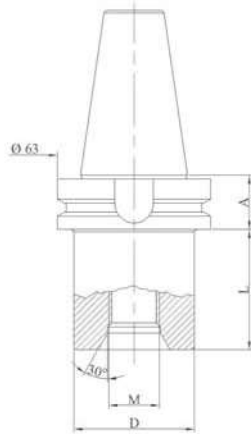


Special tool holders are made on request



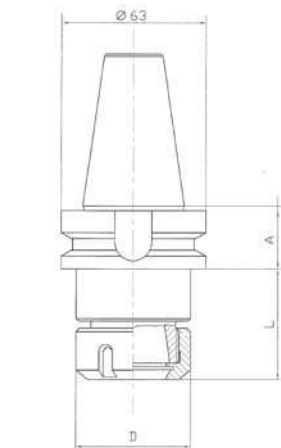
PULL STUD

Code	Type	L	
MVVE900	M16 angle 45°	60	*



DRILL POINT HOLDER

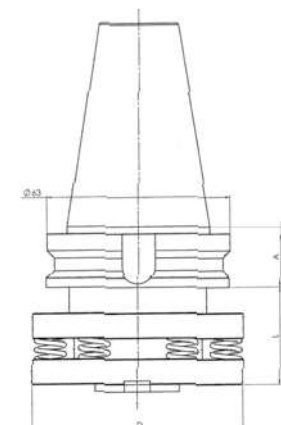
Code	A	M	D	L
MVLF101	27	1/2"	45	0
MVLF102	27	1/2"	45	23
MVLF103	27	1/2"	45	45
MVLF106	27	M30	45	23
MVLF108	27	1/2"	45	100
MVLF109	27	1/2"	45	160
MVLF110	27	1/2"	45	200
MVLF134	27	1/2"	45	250



ER COLLET CHUCK HOLDER

Code	A	Collet type	D	L
MVLF131	27	ER32	50	72,5
MVLF132	27	ER40	63	76,25

For ER collets see page 77
 For wrenches see page 75
 For ring nuts see page 75



SPRING LOADED ADAPTER

Code	A	L
MVLF140	27	60

Special tool holders are made on request