

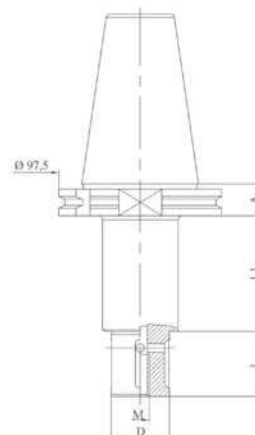
Tool holders ISO 50

Type "DIN 69871/A", "Omag", "2T", "Bidese"



GRINDING WHEEL HOLDER

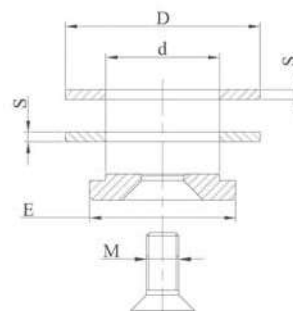
Code	A	D	L	L1
MVDIN511	19,1	22	20	70
MVDIN522	19,1	22	34	70
MVDIN512	19,1	22	39	70
MVDIN523	19,1	22	47	70
MVDIN513	19,1	22	80	70
MVDIN514	19,1	35	20	70
MVDIN524	19,1	35	32	70
MVDIN515	19,1	35	39	70
MVDIN525	19,1	35	47	70
MVDIN516	19,1	35	80	70
MVDIN518	19,1	35	100	70
MVDIN519	19,1	35	140	70
MVDIN520	19,1	35	150	70
MVDIN517	19,1	45	160	70



LOCKING KIT

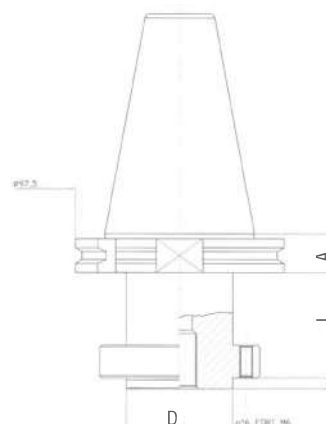
Kit made up of 2 spacer rings, 1 locking washer, 1 stainless steel or zinc-coated locking screw.

Code	d	D	E	M	S
M200	22	60	45	10	3
M210	35	65	45	12	3
M220	45	98	78	M16	3



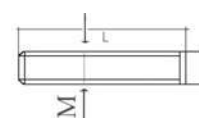
GRINDING WHEEL HOLDER

Code	A	D	L1
MVDIN521C	19,1	50	35
MVDIN526L	19,1	50	75

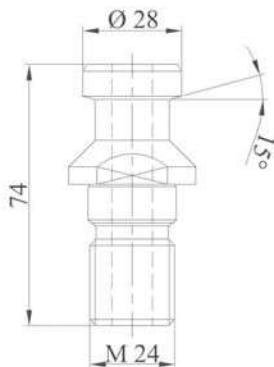


LOCKING KIT

Code	M	L
M230	n° 6 screws	6 35

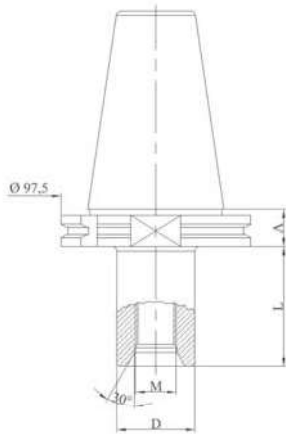


Special tool holders are made on request



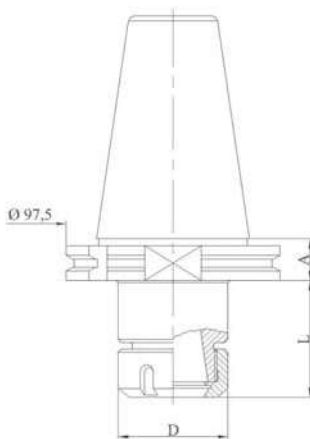
PULL STUD

Code	Type
MVDIN500-0M	M24 angle 15°



DRILL POINT HOLDER

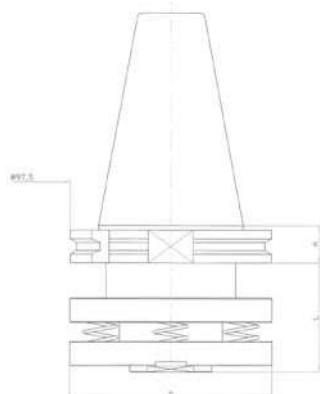
Code	A	M	D	L
MVDIN501	19,1	1/2"	40	50
MVDIN502	19,1	1/2"	40	80
MVDIN503	19,1	1/2"	40	120
MVDIN504	19,1	1/2"	40	200
MVDIN505	19,1	1/2"	40	250
MVDIN507	19,1	1/2"	40	300
MVDIN508	19,1	1/2"	40	400
MVDIN509	19,1	1/2"	40	500
MVDIN506	19,1	M30	40	80



ER COLLET CHUCK HOLDER

Code	A	Collet type	D	L
MVDIN531	19,1	ER32	50	72,5
MVDIN532	19,1	ER40	63	76,25

For ER collets see page 77
 For wrenches see page 75
 For ring nuts see page 75



SPRING LOADED ADAPTER

Code	A	L
MVDIN540	19,1	60

Special tool holders are made on request