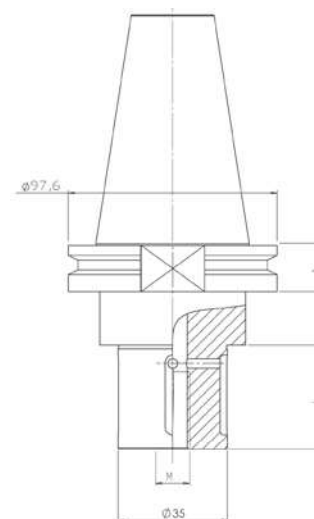




### GRINDING WHEEL HOLDER

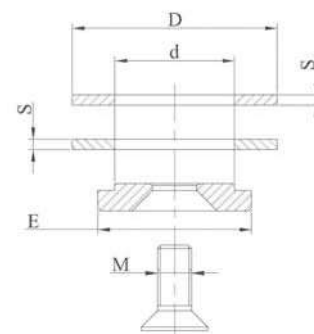
Code	A	D	L
MVDIN522CMS	19,1	22	34
MVDIN512CMS	19,1	22	39
MVDIN523CMS	19,1	22	47
MVDIN513CMS	19,1	22	80
MVDIN524CMS	19,1	35	32
MVDIN515CMS	19,1	35	39
MVDIN525CMS	19,1	35	47
MVDIN516CMS	19,1	35	80



### LOCKING KIT

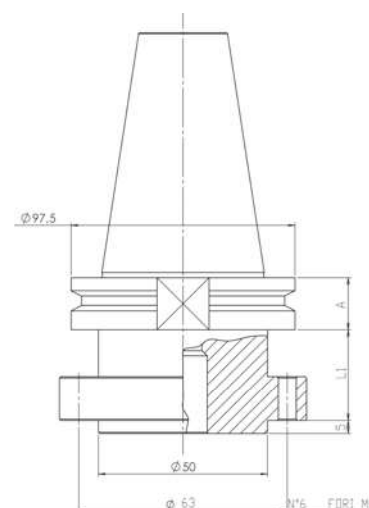
Kit made up of 2 spacer rings, 1 locking washer, 1 stainless steel or zinc-coated locking screw.

Code	d	D	E	M	S
M200	22	60	45	10	3
M210	35	60	45	12	3



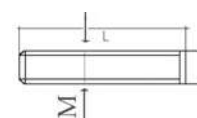
### GRINDING WHEEL HOLDER

Code	A	D	L1
MVDIN521CMS	19,1	50	35
MVDIN526CMS	19,1	50	75

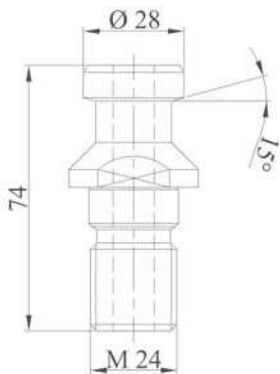


### LOCKING KIT

Code	M	L
M230	n° 6 screws	6

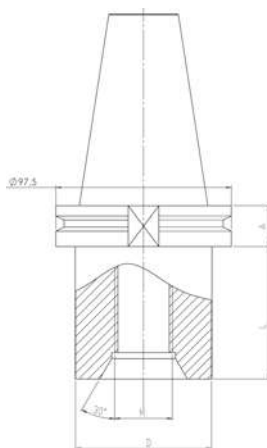


*Special tool holders are made on request*



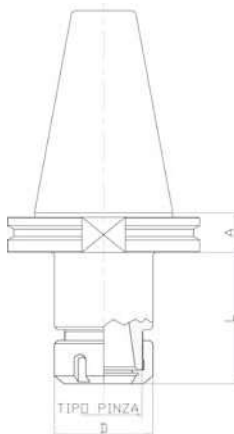
## PULL STUD

Code	Type
MVDIN500	DIN 69872



## DRILL POINT HOLDER

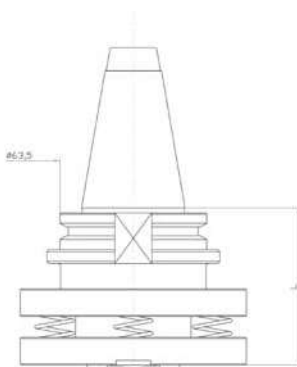
Code	A	M	D	L
MVDIN501CMS	19,1	1/2"	40	50
MVDIN502CMS	19,1	1/2"	40	80
MVDIN503CMS	19,1	1/2"	40	120
MVDIN504CMS	19,1	1/2"	40	200
MVDIN505CMS	19,1	1/2"	40	250
MVDIN506CMS	19,1	30	40	50



## ER COLLET CHUCK HOLDER

Code	A	Collet type	D	L
MVDIN531CMS	19,1	ER32	50	72,5
MVDIN532CMS	19,1	ER40	63	72,5

For ER collets see page 77  
 For wrenches see page 75  
 For ring nuts see page 75



## SPRING LOADED ADAPTER

Code	L
MVDIN540CMS	70

*Special tool holders are made on request*