

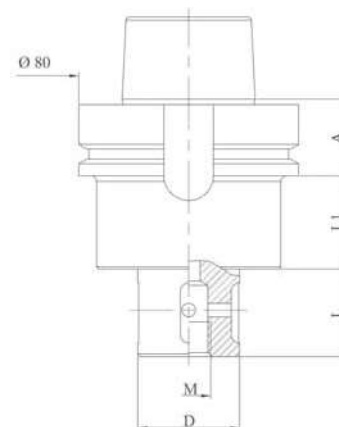
Tool holders HSK 63 A

Type "DIN 69893", "Denver"



GRINDING WHEEL HOLDER

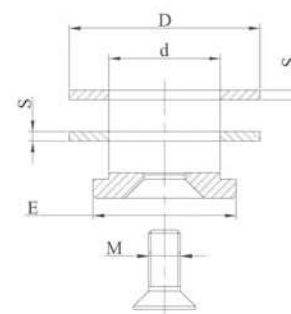
Code	A	D	L	L1
MVIM111	26	22	20	24
MVIM122	26	22	34	24
MVIM112	26	22	39	24
MVIM123	26	22	47	24
MVIM113	26	22	80	24
MVIM114	26	35	20	24
MVIM124	26	35	34	24
MVIM115	26	35	39	24
MVIM125	26	35	47	24
MVIM116	26	35	80	24
MVIM117	26	45	45	24
MVIM115X	26	35	39	58



LOCKING KIT

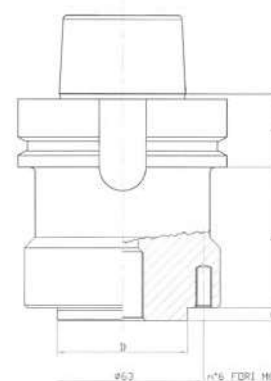
Kit made up of 2 spacer rings, 1 locking washer, 1 stainless steel or zinc-coated locking screw.

Code	d	D	E	M	S
M200	22	60	45	10	3
M210	35	60	45	12	3
M220	45	98	78	M16	3



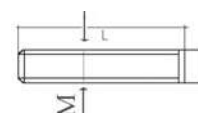
GRINDING WHEEL HOLDER

Code	A	D	L	L1
MVIM121C	26	50	5	30,9 6 holes
MVIM126L	26	50	5	75 6 holes



LOCKING KIT

Code	M	L
M230	n° 6 screws	6

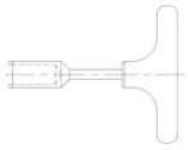


COOLANT GROUP

Code	Type
MVIM900	Group: Pivot, Screw, OR

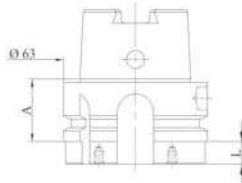


Special tool holders are made on request



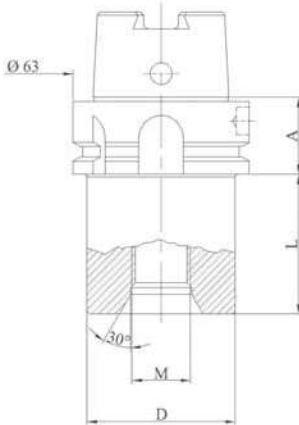
WRENCH

Code	Type
MVIM901	WRENCH



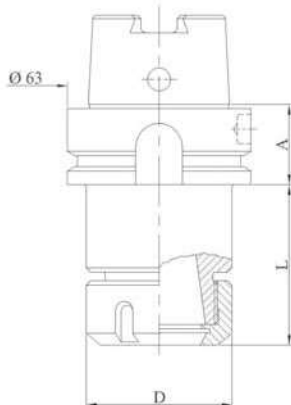
HEAD HOLDER

Code	A	L1
MVIM128	26	10



DRILL POINT HOLDER

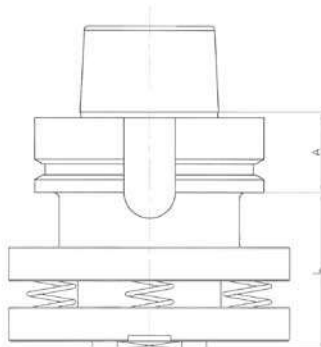
Code	A	M	D	L
MVIM101	26	1/2"	50	50
MVIM106	26	M30	50	50
MVIM101SX	26	1/2"	50	50
MVIM101SX	26	1/2"	45	30



ER COLLET CHUCK HOLDER

Code	A	Collet type	D	L
MVIM131	26	ER32	50	50
MVIM132	26	ER40	63	55

For ER collets see page 77
 For wrenches see page 75
 For ring nuts see page 75



SPRING LOADED ADAPTER

Code	A	L
MVIM140	26	60

Special tool holders are made on request