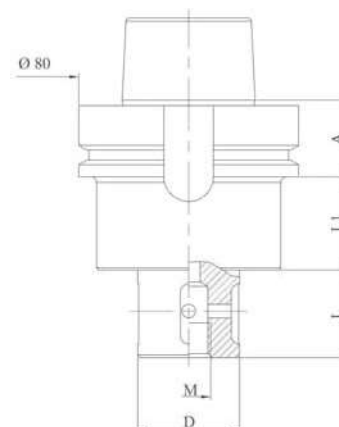




### GRINDING WHEEL HOLDER

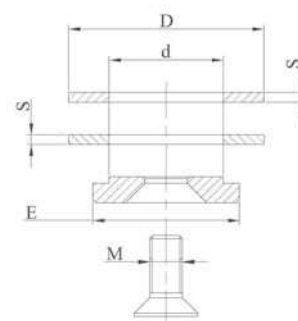
Code	A	D	L	L1
MVBE111	26	22	20	44
MVBE112	26	22	34	44
MVBE122	26	22	39	44
MVBE123	26	22	47	44
MVBE113	26	22	90	44
MVBE114	26	35	20	44
MVBE115	26	35	32	44
MVBE124	26	35	39	44
MVBE125	26	35	47	44
MVBE116	26	35	90	44
MVBE118	26	35	160	44
MVBE117	26	45	190	44



### LOCKING KIT

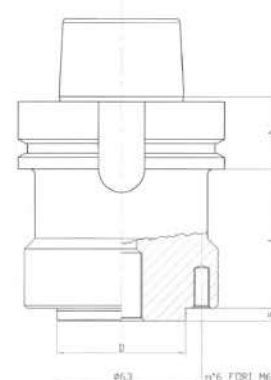
Kit made up of 2 spacer rings, 1 locking washer, 1 stainless steel or zinc-coated locking screw.

Code	d	D	E	M	S
M200	22	60	45	10	3
M210	35	60	45	12	3
M220	45	98	78	M16	3



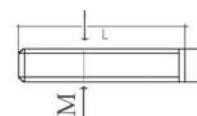
### GRINDING WHEEL HOLDER

Code	A	D	L	L1
MVBE118	26	50	5	44
MVBE119	26	50	5	100
MVBE120	26	50	5	200

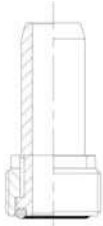


### LOCKING KIT

Code	M	L
M230	n° 6 screws	35

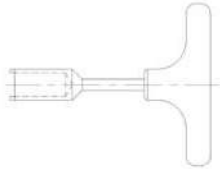


*Special tool holders are made on request*



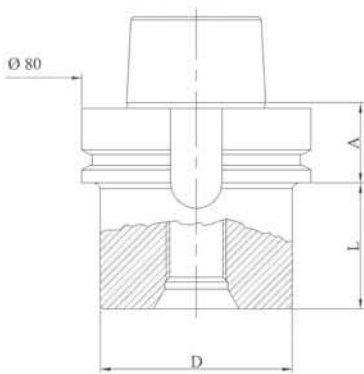
### COOLANT GROUP

Code	Type
MVBE900	Group: Pivot, Screw, OR



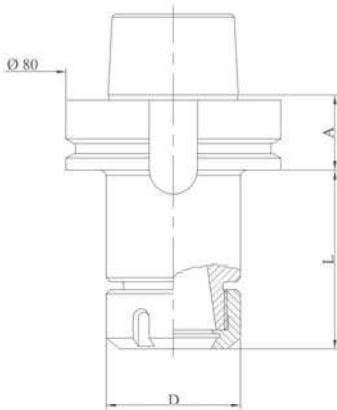
### WRENCH

Code	Type
MVBE901	WRENCH



### DRILL POINT HOLDER

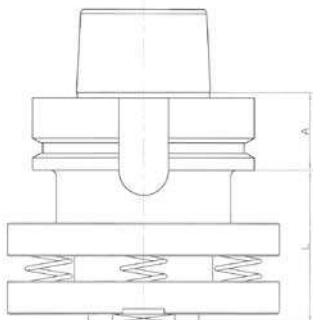
Code	A	M	D	L
MVBE101	26	1/2"	67	44
MVBE102	26	1/2"	67	80
MVBE103	26	1/2"	67	120
MVBE104	26	1/2"	62	200
MVBE106	26	M30	67	44



### ER COLLET CHUCK HOLDER

Code	A	Collet type	D	L
MVBE131	26	ER32	50	94
MVBE132	26	ER40	63	94

For ER collets see page 77  
 For wrenches see page 75  
 For ring nuts see page 75



### SPRING LOADED ADAPTER

Code	A	L
MVBE140	26	60

*Special tool holders are made on request*