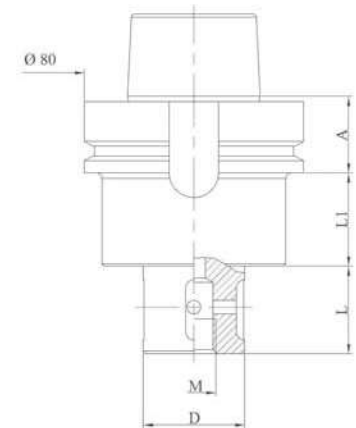




### GRINDING WHEEL HOLDER

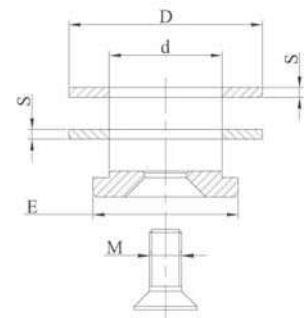
Code	A	D	L	L1
MVHSK80111	26	22	20	24
MVHSK80122	26	22	34	24
MVHSK80112	26	22	39	24
MVHSK80123	26	22	47	24
MVHSK80113	26	22	80	24
MVHSK80114	26	35	20	24
MVHSK80124	26	35	34	24
MVHSK80115	26	35	39	24
MVHSK80125	26	35	47	24
MVHSK80116	26	35	80	24
MVHSK80117	26	45	45	24



### LOCKING KIT

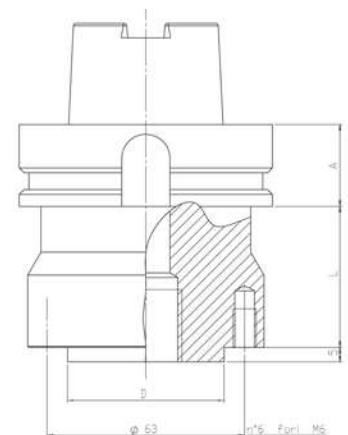
Kit made up of 2 spacer rings, 1 locking washer, 1 stainless steel or zinc-coated locking screw.

Code	d	D	E	M	S
M200	22	60	45	10	3
M210	35	65	45	12	3
M220	45	98	78	M16	3



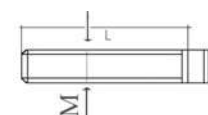
### GRINDING WHEEL HOLDER

Code	A	D	L1
MVHSK80121C	26	50	35
MVHSK80126L	26	50	75

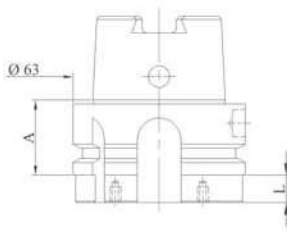


### LOCKING KIT

Code	M	L
M230	n° 6 screws	6 35

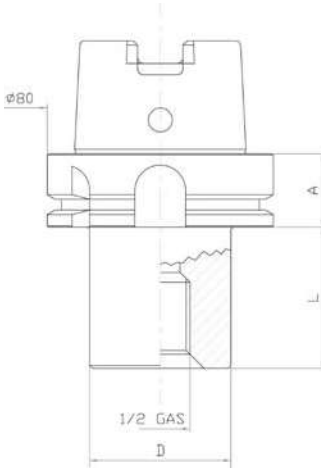


*Special tool holders are made on request*



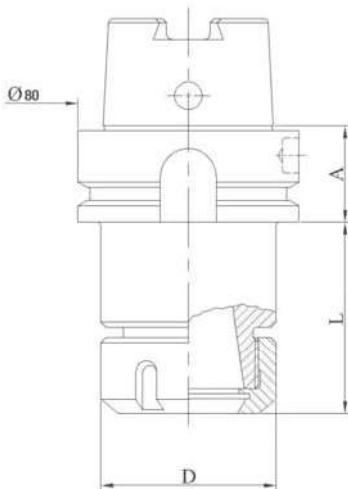
## HEAD HOLDER

Code	A	L1
MVHSK80128	26	10



## DRILL POINT HOLDER

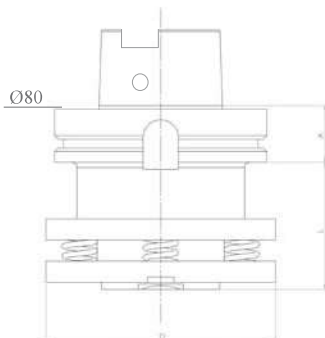
Code	A	M	D	L
MVHSK80101	26	1/2"	50	50
MVHSK80106	26	M30	50	50
MVHSK80101SX	26	1/2"	50	50



## ER COLLET CHUCK HOLDER

Code	A	Collet type	D	L
MVHSK80131	26	ER32	50	50
MVHSK80132	26	ER40	63	55

For ER collets see page 77  
 For wrenches see page 75  
 For ring nuts see page 75



## SPRING LOADED ADAPTER

Code	A	L
MVHSK80140	26	50

*Special tool holders are made on request*